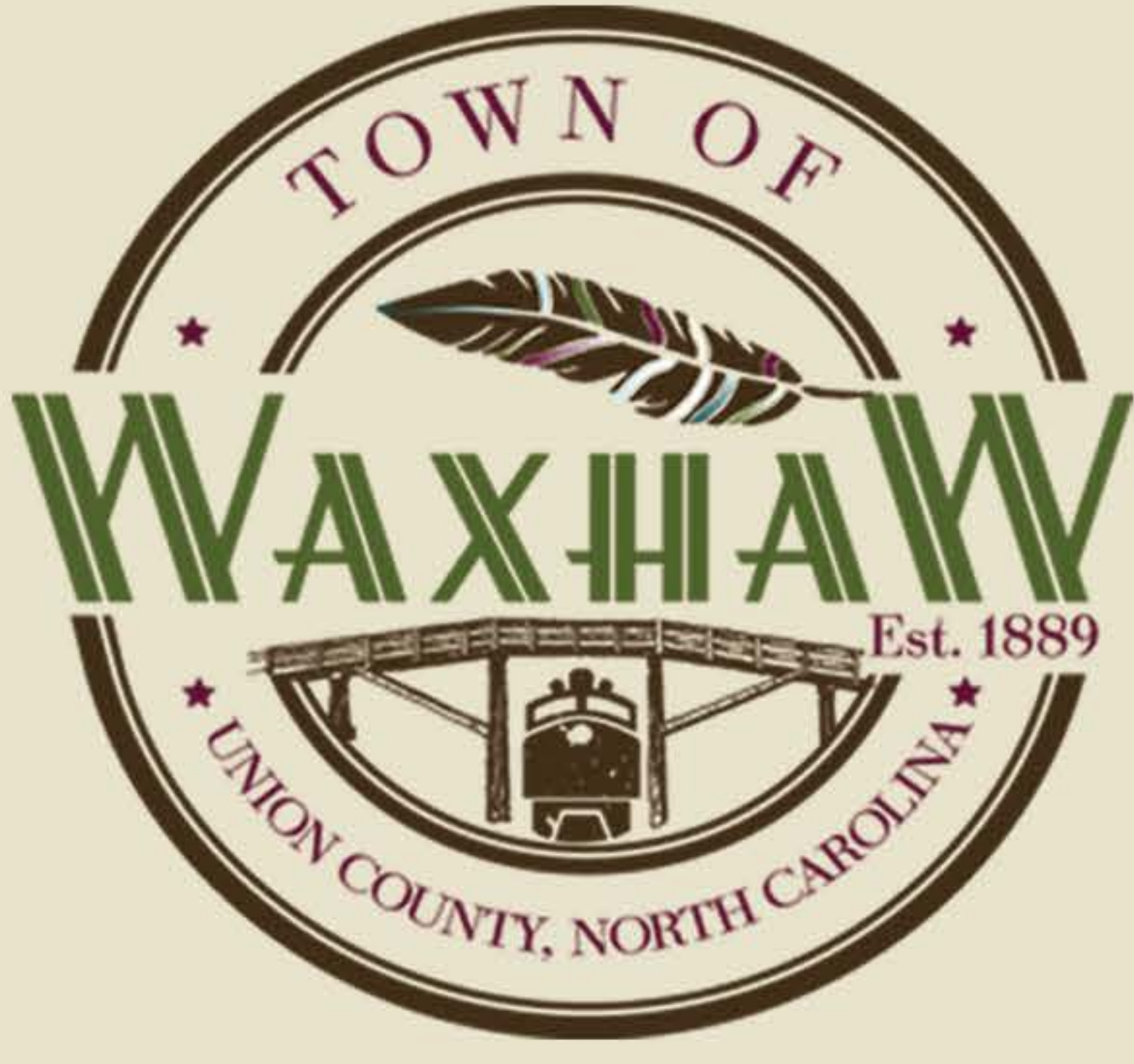


WELCOME TO THE

# TOWN OF WAXHAW



**18,500**  
POPULATION



**Nº1** SUBURB IN  
CHARLOTTE, NC



**35** RESTAURANTS & BARS

## STAY IN THE LOOP!



- SIGN UP FOR **NEWS FLASHES** FROM THE TOWN
- FLIP THROUGH OUR MONTHLY DIGITAL NEWSLETTER, **WAXHAW HAPPENINGS**
- READ OUR WEEKLY SPREAD IN THE **TRI-W NEWSPAPER**

## COMMUNICATIONS



FOLLOW US ON SOCIAL MEDIA!

- @TOWNWAXHAW
- @TOWNOFWAXHAWNC
- @TOWNOFWAXHAWNC

## PARKS & REC



**140 ACRES**  
PARKS & TRAILS

**26** COMMUNITY  
EVENTS

**8**

PROGRAMMING OPPORTUNITIES  
FOR ALL AGES! [REGISTER HERE!](#)

WAXHAW HAS SEVERAL “DONUT HOLES,” AREAS WITH A WAXHAW ZIP CODE THAT DON’T PAY WAXHAW TAXES OR RECEIVE TOWN SERVICES SUCH AS TRASH PICKUP.

## DONUT HOLES



DO YOU LIVE  
WITHIN THE  
TOWN LIMITS?

CHECK OUT THIS  
INTERACTIVE MAP  
TO FIND OUT!

## TRASH & RECYCLING



RESIDENTS IN WAXHAW’S TOWN LIMITS ARE SERVICED BY WASTE PRO FOR SOLID WASTE AND RECYCLING PICKUP. [FIND YOUR PICKUP SCHEDULE HERE!](#)

WASTE PRO  
704-340-5789  
OR 980-255-3800

**2** BULK ITEM PICK-UP DAYS PER YEAR  
SPRING & FALL CLEAN-UP EVENTS

## WAXHAW IS GROWING

**\$225K** MEDIAN  
HOME VALUE



**1.8B** IN TAXABLE  
PROPERTY

## DEVELOPMENT PROJECTS



[VIEW AN INTERACTIVE MAP OF DEVELOPER PROJECTS HERE.](#)

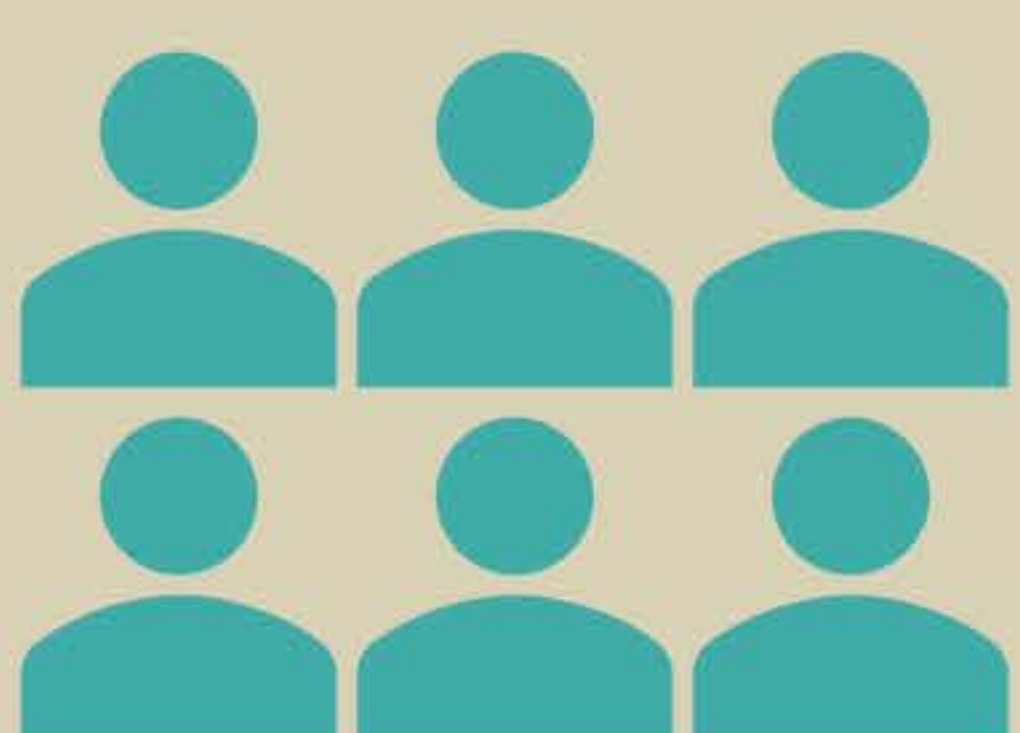
## REGISTER YOUR PET



**DON'T FRET FOR A LOST PET.**

REGISTERING YOUR DOG HELPS MAKE SURE THEY COME HOME. YOU ARE ALSO REQUIRED TO REGISTER YOUR DOG UNDER WAXHAW CODE.

[GO TO WWW.PETDATA.COM](http://WWW.PETDATA.COM) AND ENTER YOUR ZIP CODE UNDER LICENSE NOW



WAXHAW IS A COUNCIL-MANAGER  
FORM OF GOVERNMENT

## BOARD OF COMMISSIONERS



**5** COMMISSIONERS  
INCLUDING 1 MAYOR PRO-TEM

**1** MAYOR

ELECTIONS ARE EVERY TWO YEARS IN WAXHAW, AND EACH COMMISSIONER SERVES A 4-YEAR TERM