

EXTERIOR FINISH SCHEDULE	
SF-1	STOREFRONT - "DARK BRONZE"
PUW	PICK-UP WINDOW TO MATCH STOREFRONT
M-1	PARAPET CAP/ BRAKE METAL - "DARK BRONZE"
M-3	EXCEPTIONAL METALS - "BRIGHT RED"
M-4	EXCEPTIONAL METALS - "SILVER METALLIC"
M-5	BRAKE METAL - "CLEAR ANNOXIDIZED"
M-7	EXCEPTIONAL METALS - "CUSTOM DARK GREY"
BR-1	BRICK VENEER - MODULAR SIZE, "TAN"
BR-1A	BRICK VENEER - THIN BRICK, "TAN" TO MATCH BR-1
BR-2	BRICK VENEER - MODULAR, "DARK GRAY"
ACM	ALUMINUM COMPOSITE PANEL - "WENDY'S RED"
E-7	EIFS - "DARK GREY"
E-8	EIFS - "TAN"
E-9	EIFS - "SILVER" (SMOOTH FINISH)
BL-1	BOLLARD SLEEVE - "YELLOW"
PEX-1	PAINT - DARK BRONZE (SEE PAINT SCHEDULE)
PEX-3	PRE-FINISHED DARK BRONZE SIGN CABINETS (SEE PAINT SCHEDULE)
PEX-10	PAINT / POWDER COAT - BLACK (SEE PAINT SCHEDULE)
PEX-12	PAINT - DARK GREY (SEE PAINT SCHEDULE)

SITE NUMBER: 12661  
 BUILDING TYPE: (2.0) SMART 55+  
 ASSET TYPE: FREESTANDING  
 CLASSIFICATION: NEW  
 OWNER: FRANCHISE  
 BASE VERSION: 2020  
 UPGRADE CLASSIFICATION:  
 NEW BUILD  
 PROJECT YEAR: 2020  
 DESIGN TYPE: (2.0) UM BRITE  
 DRAWING RELEASE: SUMMER

Project No. **20-078**

**sniddesign**  
 ARCHITECTS

Results!

Design +,  
 Bardstown-Eastern Building  
 1449 Bardstown Rd., Suite 200  
 Louisville, Kentucky 40204  
 (502) 454-5011 (502) 454-5511 (fax)

**Wendy's.**  
 3472 PROVIDENCE RD. (NC-19)  
 WAXHAW, NC. 28173

REV.	DATE	DESCRIPTION

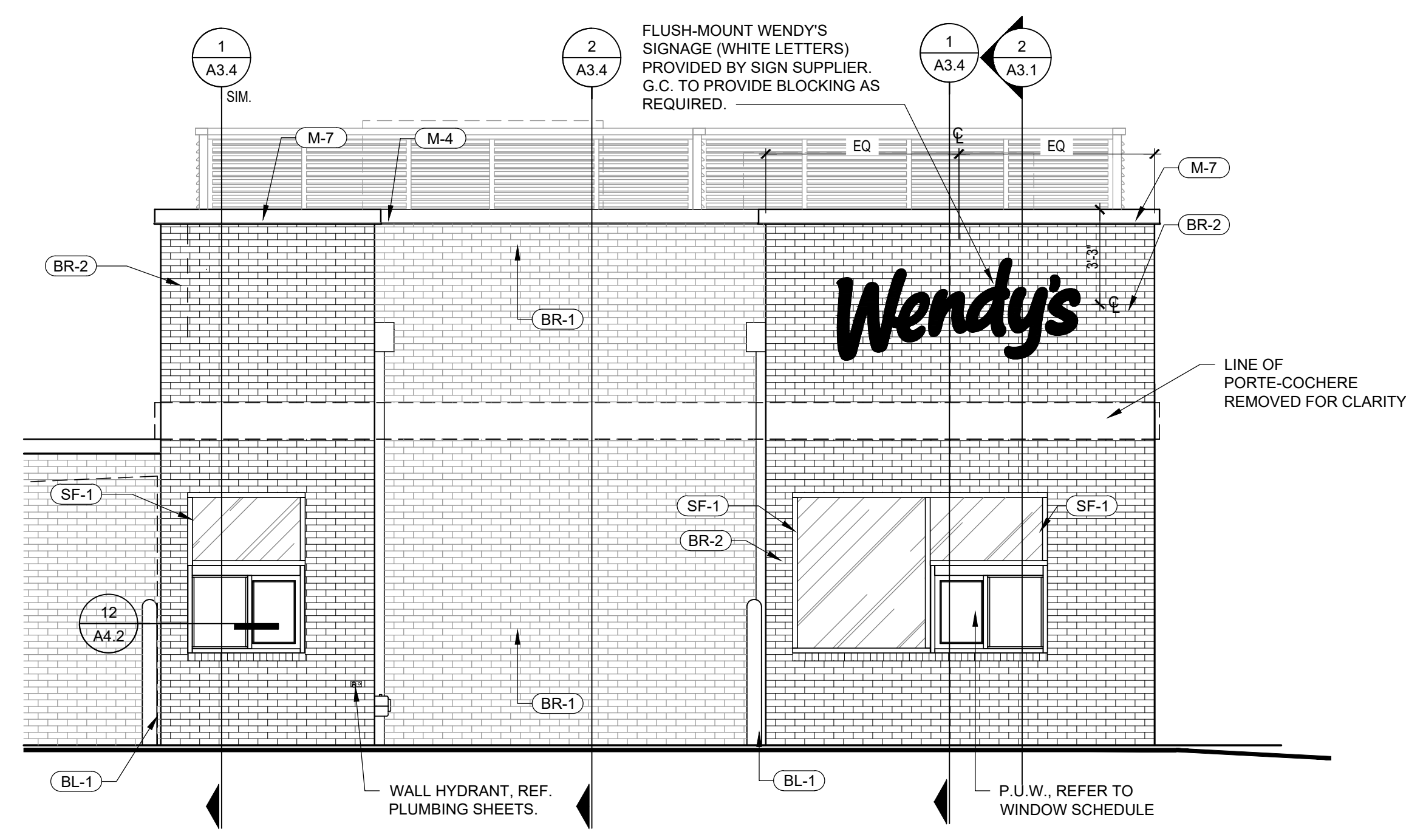
ISSUE DATE: 12/21/2020  
 PROJECT NUMBER: 12661  
 DRAWN BY: KEN BROWN  
 CHECKED BY: KEN BROWN

SEAL

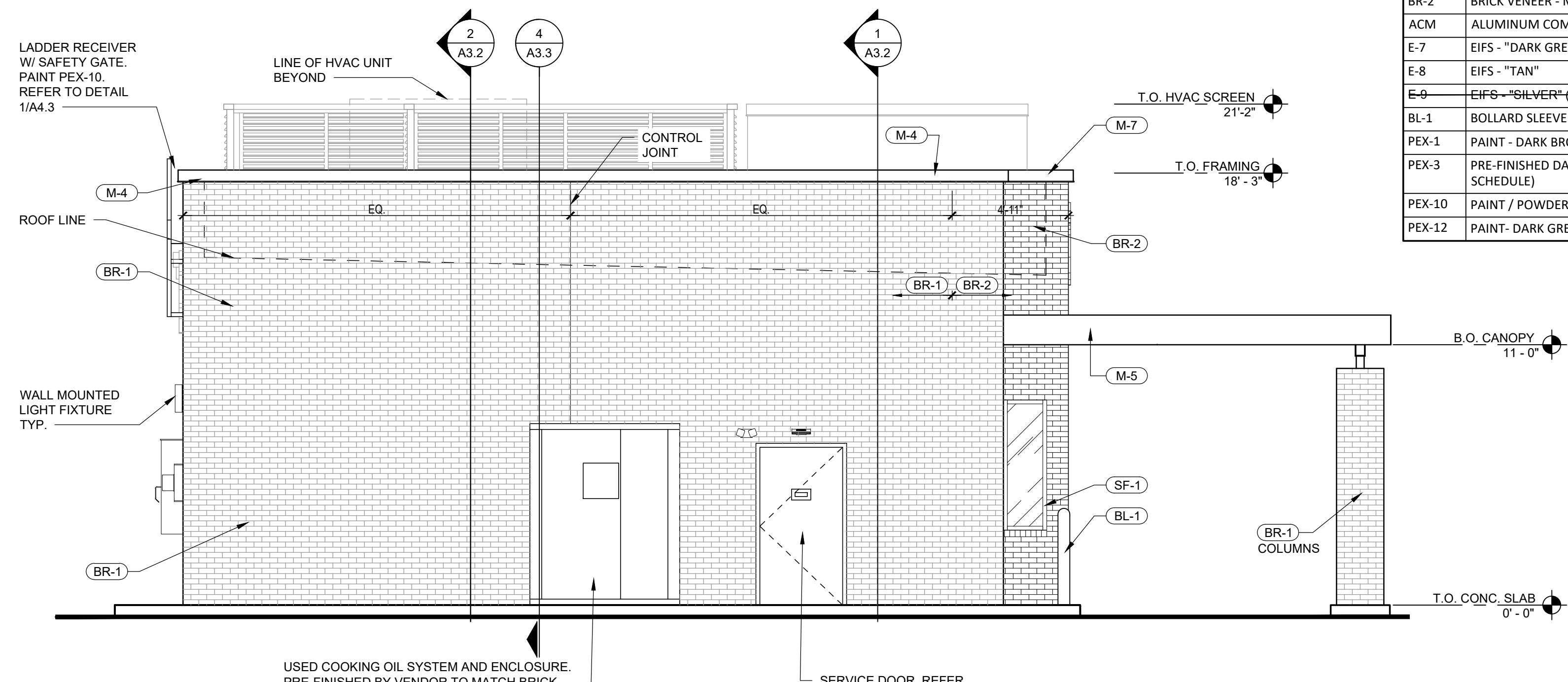
SHEET NAME  
**EXTERIOR ELEVATIONS**

SHEET NUMBER

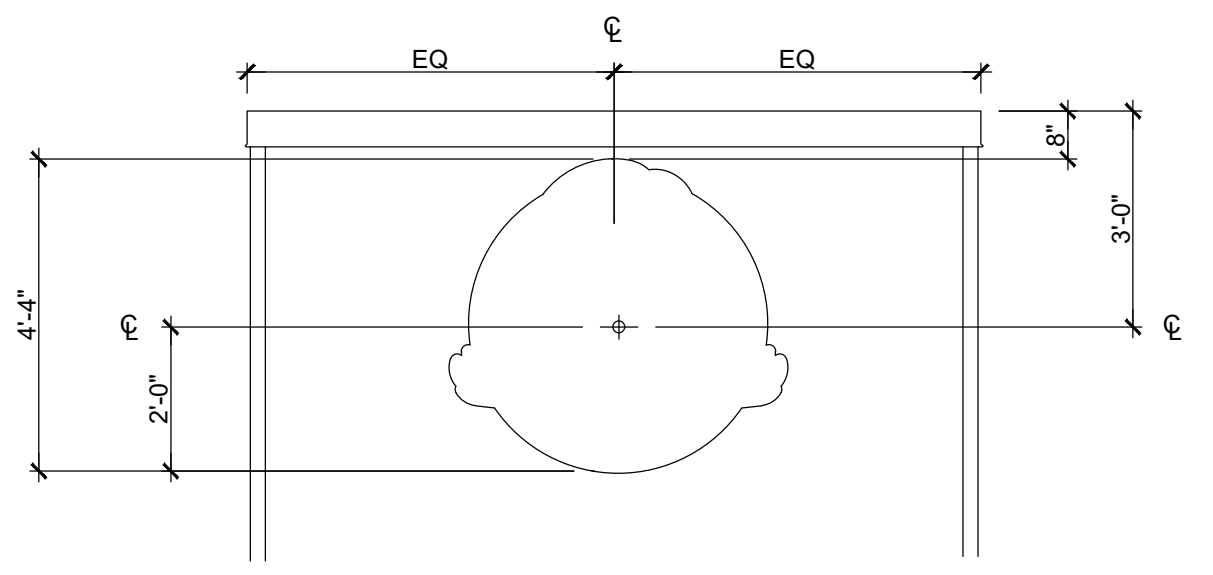
**A2.1**



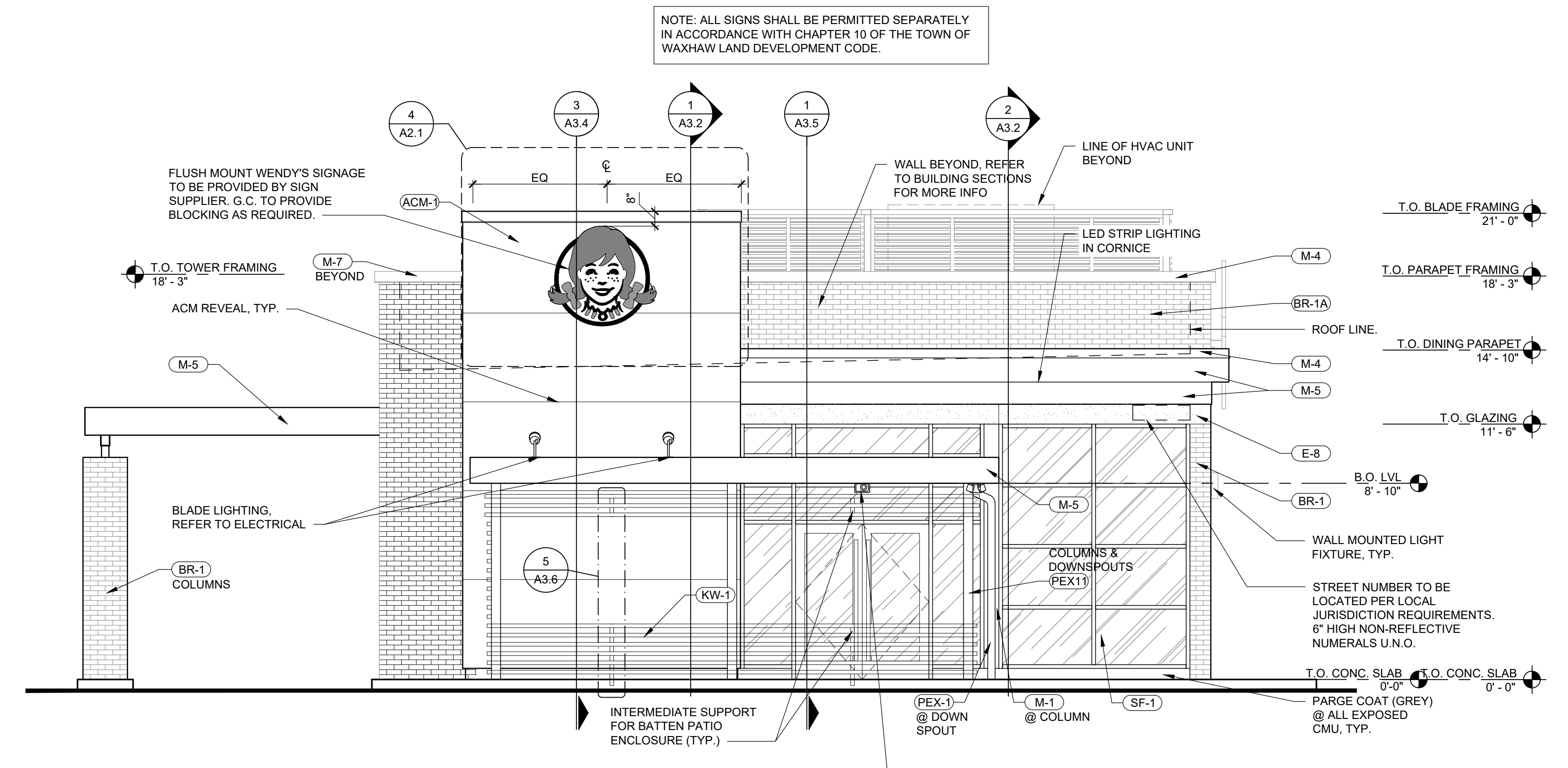
**LEFT SIDE VIEW w/o PORTE-COCHERE** 3  
 1/4" = 1'-0"



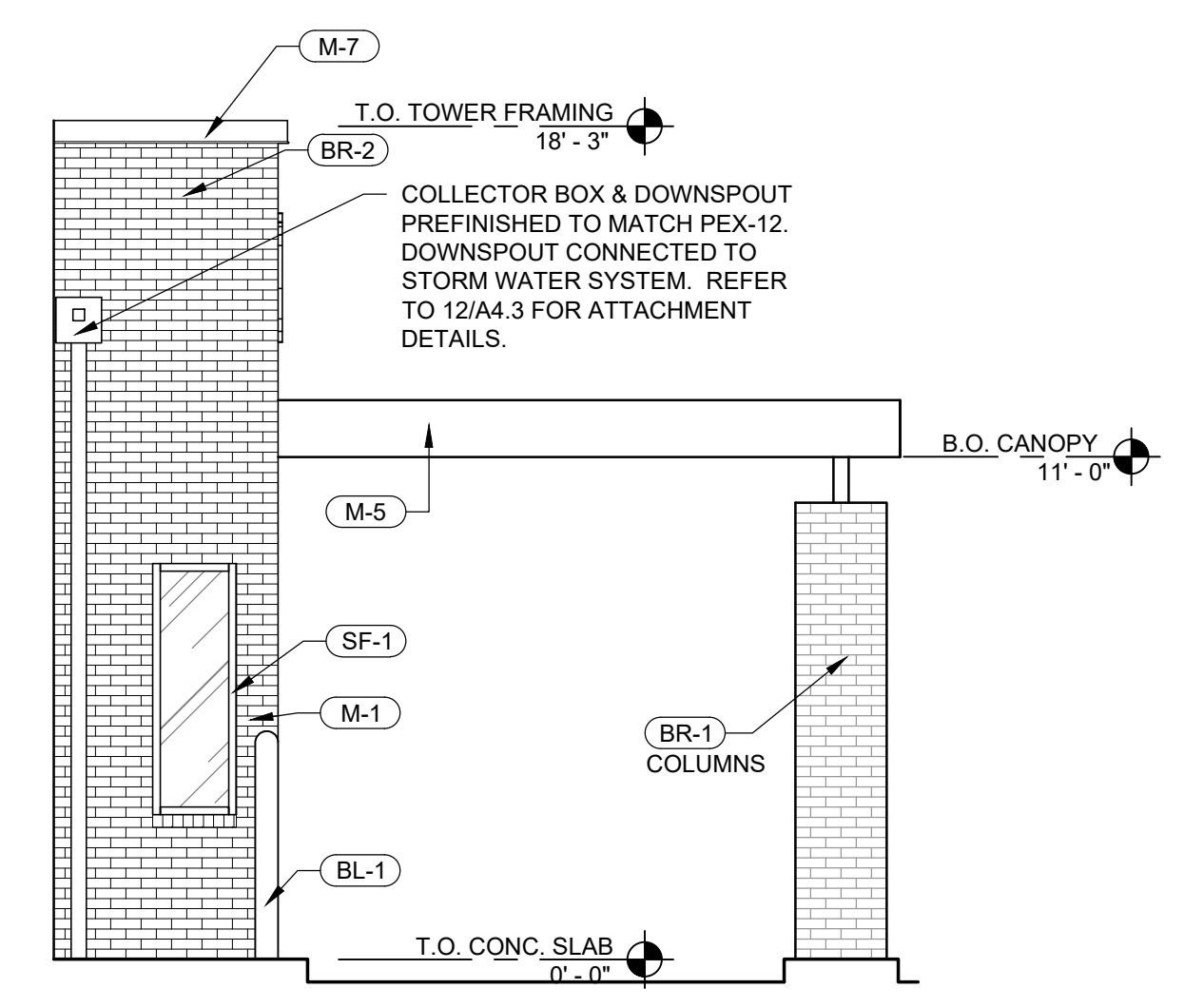
**REAR ELEVATION** 2  
 1/4" = 1'-0"



**WIRING HOLE PLACEMENT DIAGRAM** 4  
 3/8" = 1'-0"



**FRONT ELEVATION** 1  
 1/4" = 1'-0"



**REAR DRIVE-THRU ELEVATION** 3  
 1/4" = 1'-0"

4/8/2021, 10:41 PM, C:\Users\kenna.DESIGN\USAppData\Local\Temp\Apublish\_20202030\_SMART\_55\_A2-1\_Exterior Elevations.dwg, Kenna

EXTERIOR FINISH SCHEDULE	
SF-1	STOREFRONT - "DARK BRONZE"
SF-2	SPANDREL GLASS - DARK BRONZE
PUW	PICK-UP WINDOW TO MATCH STOREFRONT
M-1	PARAPET CAP/ BRAKE METAL - "DARK BRONZE"
M-3	EXCEPTIONAL METALS - "BRIGHT RED"
M-4	EXCEPTIONAL METALS - "SILVER METALLIC"
M-5	BRAKE METAL - "CLEAR ANNOXIDIZED"
M-7	EXCEPTIONAL METALS - "CUSTOM DARK GREY"
BR-1	BRICK VENEER - MODULAR SIZE, "TAN"
BR-1A	BRICK VENEER - THIN BRICK, "TAN" TO MATCH BR-1
BR-2	BRICK VENEER - MODULAR, "DARK GRAY"
ACM	ALUMINUM COMPOSITE PANEL - "WENDY'S RED"
E-7	EIFS - "DARK GREY"
E-8	EIFS - "TAN"
E-9	EIFS - "SILVER" (SMOOTH FINISH)
BL-1	BOLLARD SLEEVE - "YELLOW"
PEX-1	PAINT - DARK BRONZE (SEE PAINT SCHEDULE)
PEX-3	PRE-FINISHED DARK BRONZE SIGN CABINETS (SEE PAINT SCHEDULE)
PEX-10	PAINT / POWDER COAT - BLACK (SEE PAINT SCHEDULE)
PEX-12	PAINT - DARK GREY (SEE PAINT SCHEDULE)

SITE NUMBER: 12661  
 BUILDING TYPE: (2.0) SMART 55+  
 ASSET TYPE: FREESTANDING  
 CLASSIFICATION: NEW  
 OWNER: FRANCHISE  
 BASE VERSION: 2020  
 UPGRADE CLASSIFICATION:  
 NEW BUILD  
 PROJECT YEAR: 2020  
 DESIGN TYPE: (2.0) UM BRITE  
 DRAWING RELEASE: SUMMER

Project No. **20-078**

**snidesign**  
ARCHITECTS

Results!

Design +,  
 Bardstown-Eastern Building  
 1449 Bardstown Rd., Suite 200  
 Louisville, Kentucky 40204  
 (502) 454-5011 (502) 454-5111 (fax)

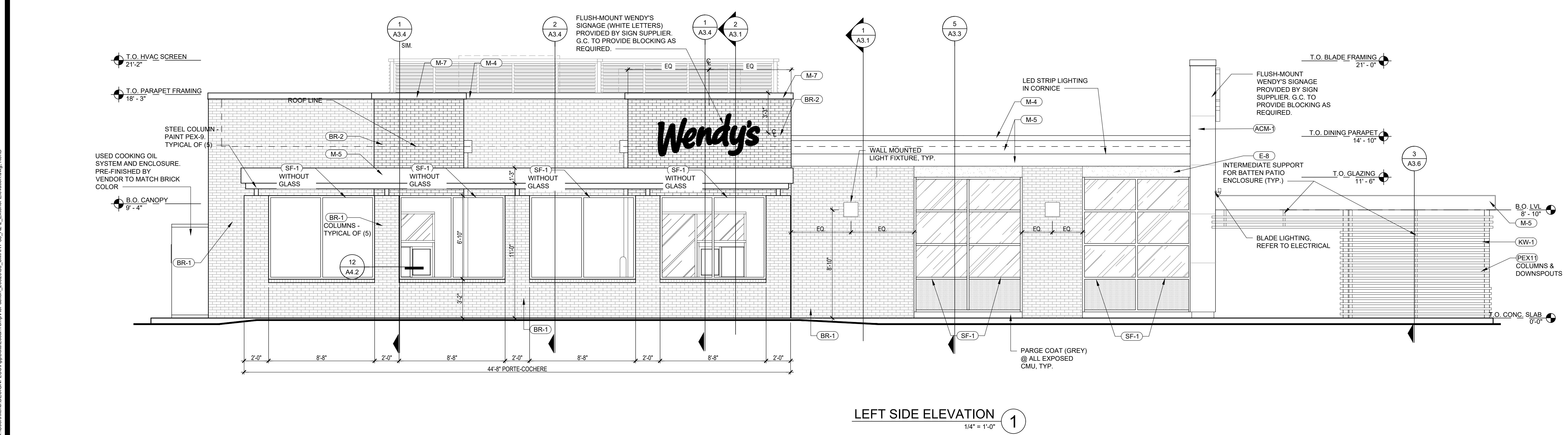
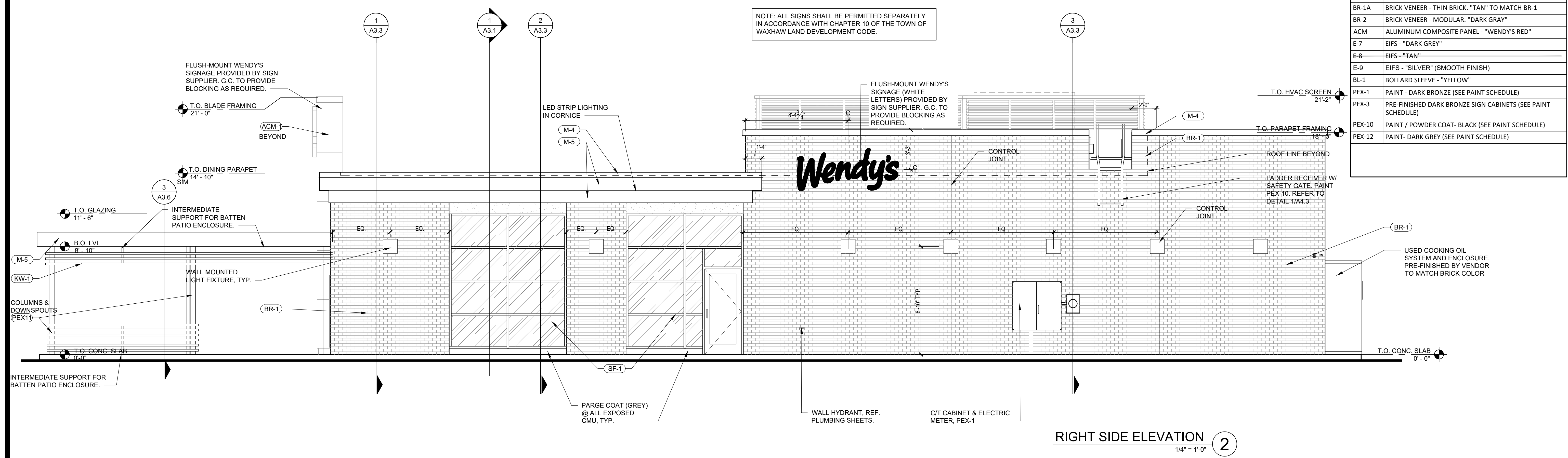
**Wendy's.**  
 3472 PROVIDENCE RD. (NC-19)  
 WAXHAW, NC. 28173

REV.	DATE	DESCRIPTION
▲		
▲		
▲		

ISSUE DATE: 12/21/2020  
 PROJECT NUMBER: 12661  
 DRAWN BY: KEN BROWN  
 CHECKED BY: KEN BROWN

SHEET NAME  
 EXTERIOR ELEVATIONS

SHEET NUMBER  
**A2.2**



4/9/2021, 10:41 PM, C:\Users\kenna.DESIGN\Public\Temp\A2.2\_Ext\_Elevation.dwg, kenna

**EXTERIOR FINISH SCHEDULE**

SF-1	STOREFRONT - "DARK BRONZE"
PUW	PICK-UP WINDOW TO MATCH STOREFRONT
M-1	PARAPET CAP/ BRAKE METAL - "DARK BRONZE"
M-3	EXCEPTIONAL METALS - "BRIGHT RED"
M-4	EXCEPTIONAL METALS - "SILVER METALLIC"
M-5	BRAKE METAL - "CLEAR ANNOXIDIZED"
M-7	EXCEPTIONAL METALS - "CUSTOM DARK GREY"
BR-1	BRICK VENEER - MODULAR SIZE, "TAN"
BR-1A	BRICK VENEER - THIN BRICK, "TAN" TO MATCH BR-1
BR-2	BRICK VENEER - MODULAR, "DARK GRAY"
ACM	ALUMINUM COMPOSITE PANEL - "WENDY'S RED"
E-7	EIFS - "DARK GREY"
E-8	EIFS - "TAN"
E-9	EIFS - "SILVER" (SMOOTH FINISH)
BL-1	BOLLARD SLEEVE - "YELLOW"
PEX-1	PAINT - DARK BRONZE (SEE PAINT SCHEDULE)
PEX-3	PRE-FINISHED DARK BRONZE SIGN CABINETS (SEE PAINT SCHEDULE)
PEX-10	PAINT / POWDER COAT - BLACK (SEE PAINT SCHEDULE)
PEX-12	PAINT - DARK GREY (SEE PAINT SCHEDULE)

SITE NUMBER: 12661  
 BUILDING TYPE: (2.0) SMART 55+  
 ASSET TYPE: FREESTANDING  
 CLASSIFICATION: NEW  
 OWNER: FRANCHISE  
 BASE VERSION: 2020  
 UPGRADE CLASSIFICATION:  
 NEW BUILD  
 PROJECT YEAR: 2020  
 DESIGN TYPE: (2.0) UM BRITE  
 DRAWING RELEASE: SUMMER

Project No. **20-078**

**sniddesign**  
 ARCHITECTS

Results!

Design +,  
 Bardtown-Eastern Building  
 1449 Bardtown Rd, Suite 200  
 Louisville, Kentucky 40204  
 (502) 454-5011 (502) 454-4511 (fax)

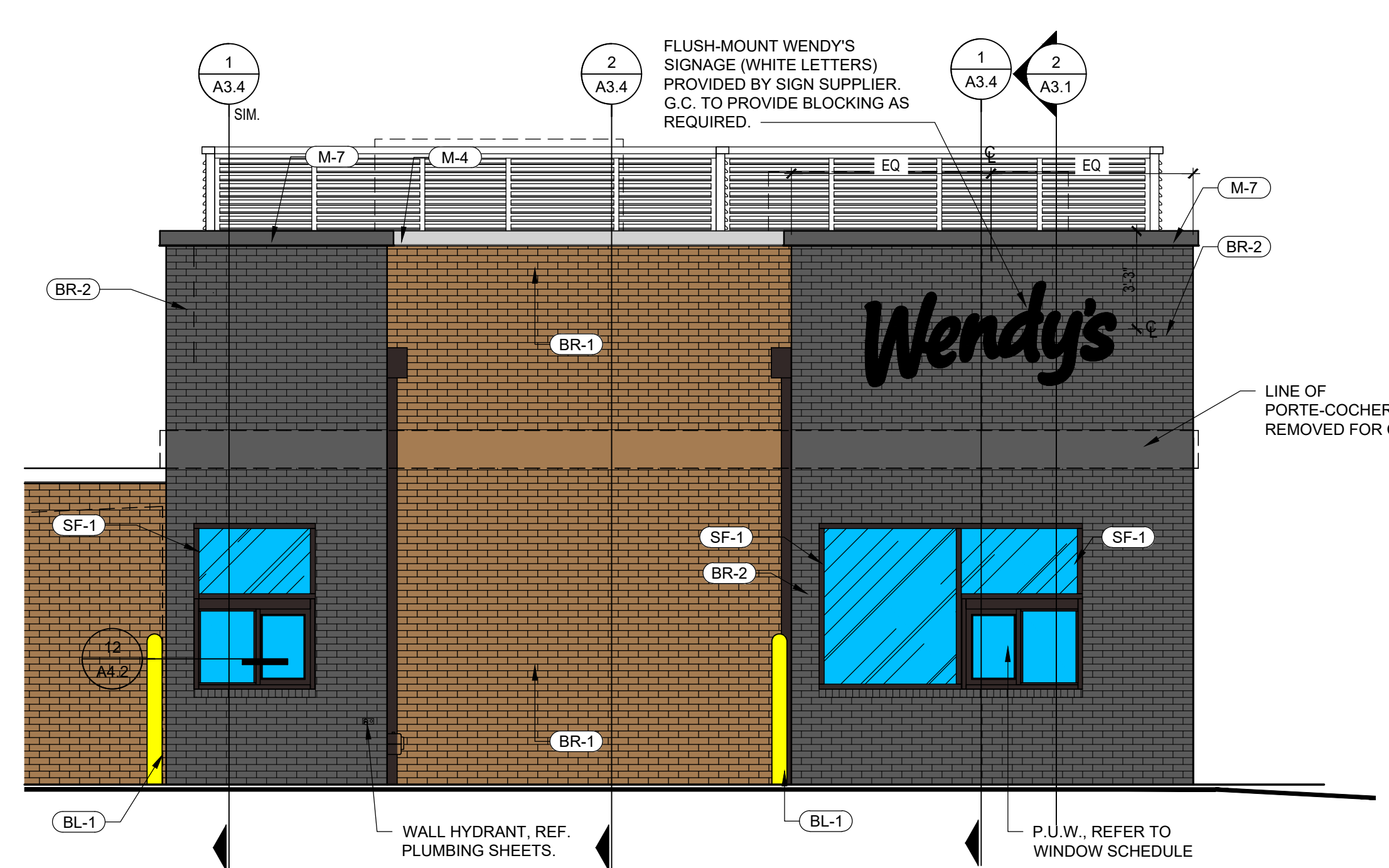
**Wendy's.**  
 3472 PROVIDENCE RD. (NC-19)  
 WAXHAW, NC. 28173

REV.	DATE	DESCRIPTION

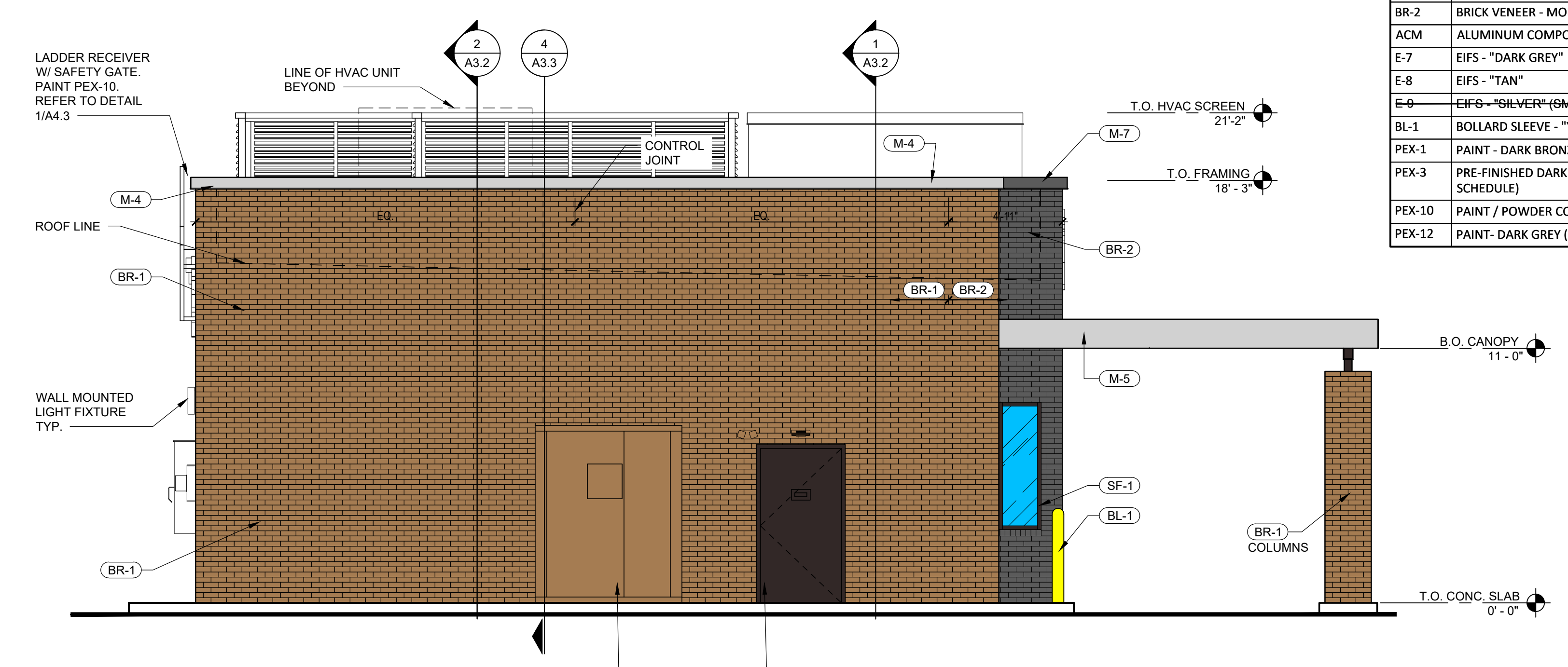
ISSUE DATE: 12/21/2020  
 PROJECT NUMBER: 12661  
 DRAWN BY: KEN BROWN  
 CHECKED BY: KEN BROWN

SHEET NAME  
**EXTERIOR ELEVATIONS**

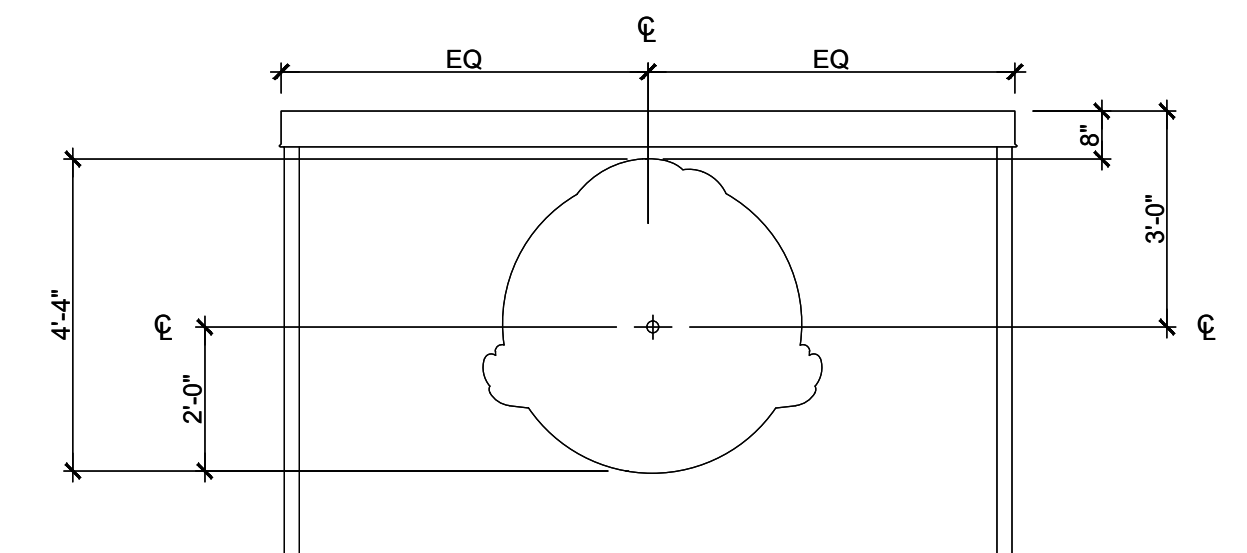
SHEET NUMBER  
**A2.1**



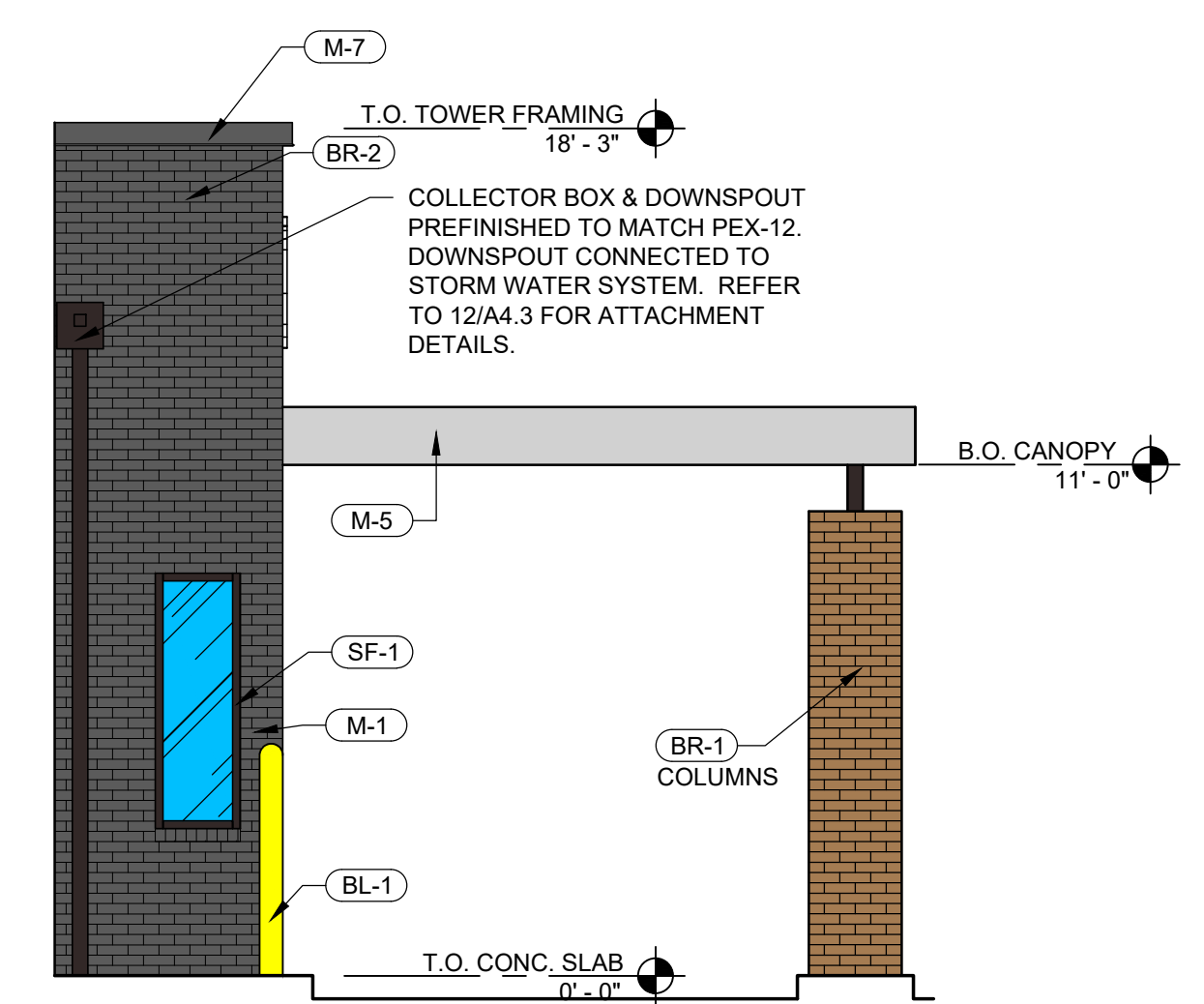
**LEFT SIDE VIEW w/o PORTE-COCHERE**  
 1/4" = 1'-0" **3**



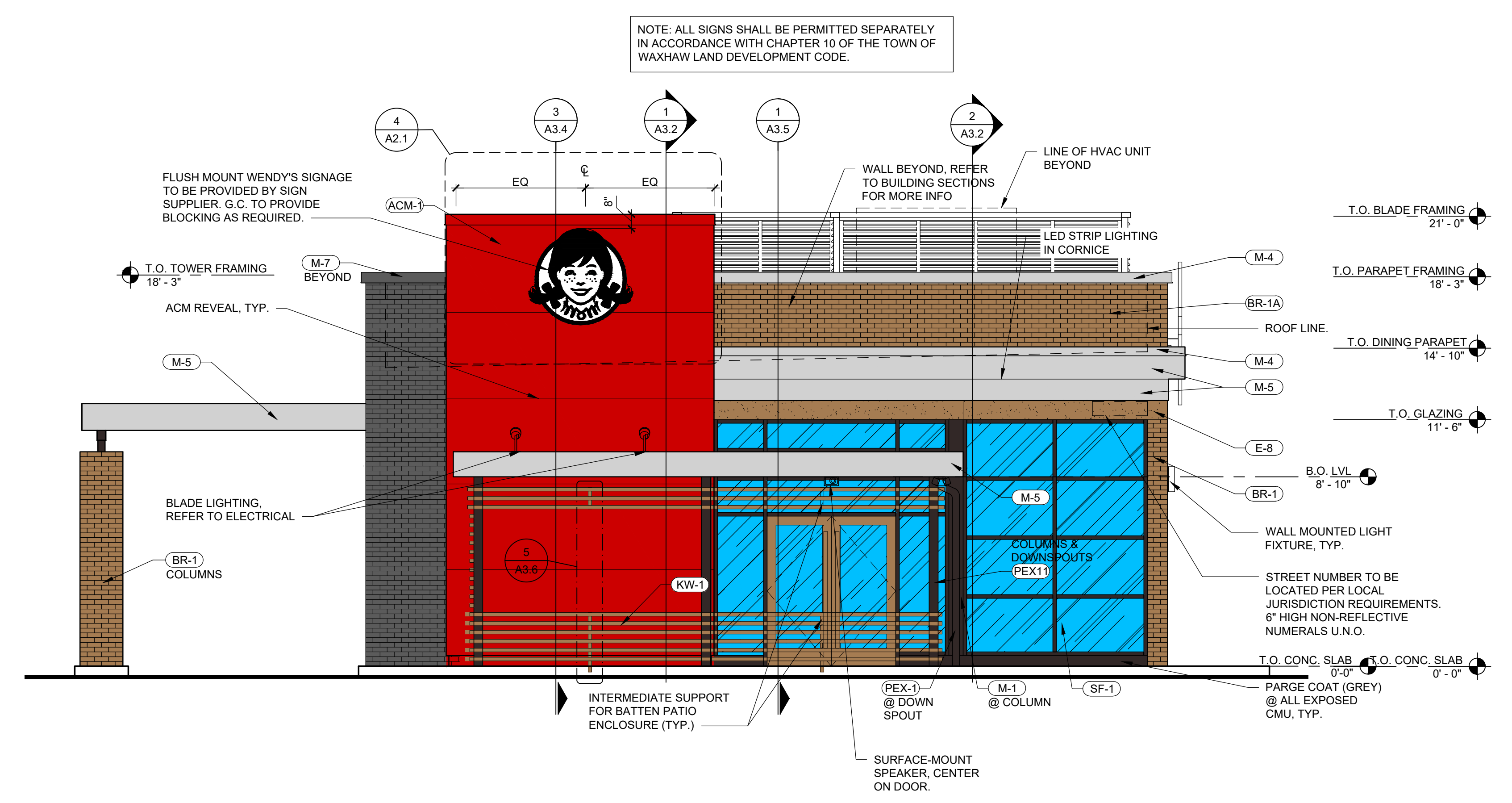
**REAR ELEVATION**  
 1/4" = 1'-0" **2**



**WIRING HOLE PLACEMENT DIAGRAM**  
 3/8" = 1'-0" **4**



**REAR DRIVE-THRU ELEVATION**  
 1/4" = 1'-0" **3**



**FRONT ELEVATION**  
 1/4" = 1'-0" **1**

4/8/2021, 10:41 PM, N:\Projects\20-078 Wendy's Waxhaw NC\Drawings\shades\30\_Smart\A2-1\_Exterior Elevations\_color.dwg, KenB

EXTERIOR FINISH SCHEDULE	
SF-1	STOREFRONT - "DARK BRONZE"
SF-2	SPANDREL GLASS - DARK BRONZE
PUW	PICK-UP WINDOW TO MATCH STOREFRONT
M-1	PARAPET CAP/ BRAKE METAL - "DARK BRONZE"
M-3	EXCEPTIONAL METALS - "BRIGHT RED"
M-4	EXCEPTIONAL METALS - "SILVER METALLIC"
M-5	BRAKE METAL - "CLEAR ANNOXIDIZED"
M-7	EXCEPTIONAL METALS - "CUSTOM DARK GREY"
BR-1	BRICK VENEER - MODULAR SIZE, "TAN"
BR-1A	BRICK VENEER - THIN BRICK, "TAN" TO MATCH BR-1
BR-2	BRICK VENEER - MODULAR, "DARK GRAY"
ACM	ALUMINUM COMPOSITE PANEL - "WENDY'S RED"
E-7	EIFS - "DARK GREY"
E-8	EIFS - "TAN"
E-9	EIFS - "SILVER" (SMOOTH FINISH)
BL-1	BOLLARD SLEEVE - "YELLOW"
PEX-1	PAINT - DARK BRONZE (SEE PAINT SCHEDULE)
PEX-3	PRE-FINISHED DARK BRONZE SIGN CABINETS (SEE PAINT SCHEDULE)
PEX-10	PAINT / POWDER COAT - BLACK (SEE PAINT SCHEDULE)
PEX-12	PAINT - DARK GREY (SEE PAINT SCHEDULE)

SITE NUMBER: 12661  
 BUILDING TYPE: (2.0) SMART 55+  
 ASSET TYPE: FREESTANDING  
 CLASSIFICATION: NEW  
 OWNER: FRANCHISE  
 BASE VERSION: 2020  
 UPGRADE CLASSIFICATION:  
 NEW BUILD  
 PROJECT YEAR: 2020  
 DESIGN TYPE: (2.0) UM BRITE  
 DRAWING RELEASE: SUMMER

Project No. **20-078**

**snid design**  
 ARCHITECTS

Results!

Design +,  
 Bardstown-Eastern Building  
 1449 Bardstown Rd, Suite 200  
 Louisville, Kentucky 40204  
 (502) 454-5011 (502) 454-4511 (fax)

**Wendy's.**  
 3472 PROVIDENCE RD. (NC-19)  
 WAXHAW, NC. 28173

REV.	DATE	DESCRIPTION
▲		
▲		
▲		

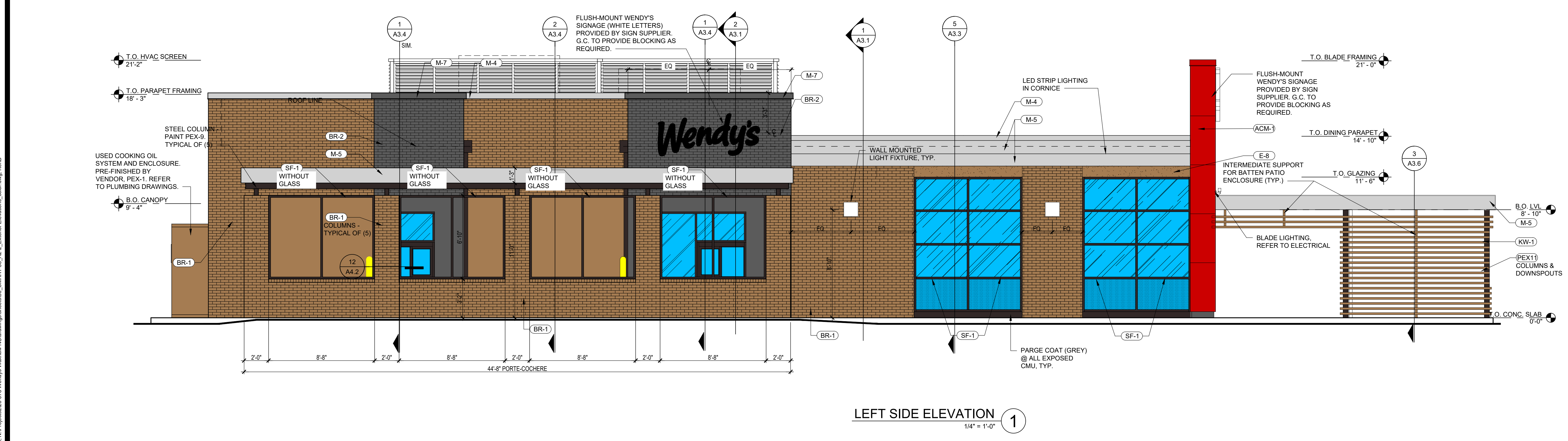
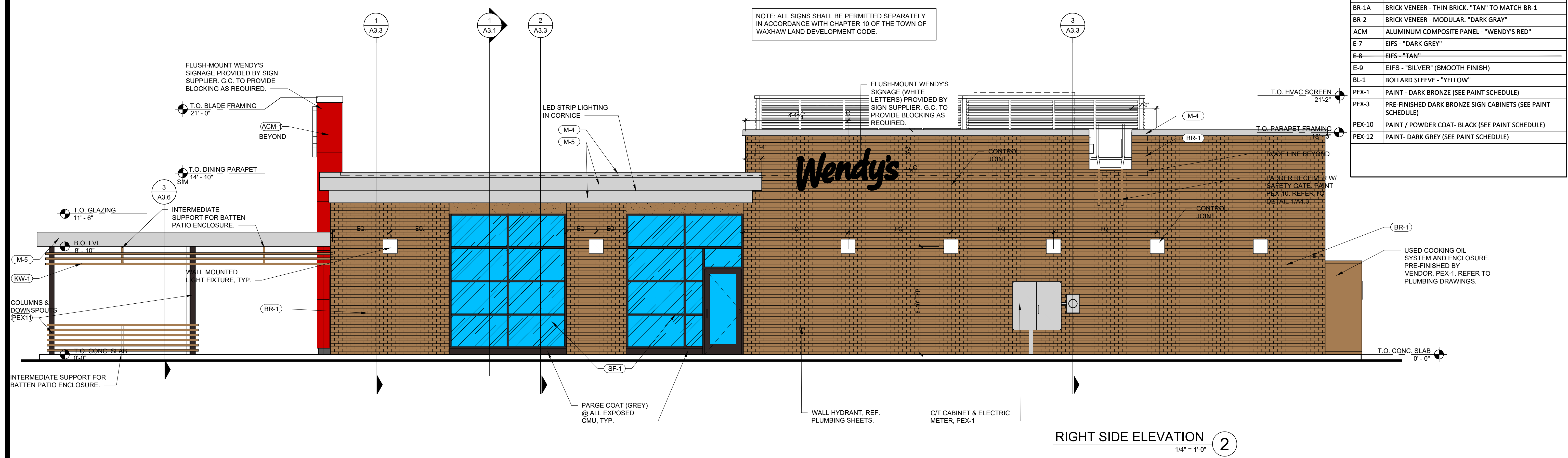
ISSUE DATE: 12/21/2020  
 PROJECT NUMBER: 12661  
 DRAWN BY: KEN BROWN  
 CHECKED BY: KEN BROWN

SEAL

SHEET NAME  
 EXTERIOR ELEVATIONS

SHEET NUMBER

**A2.2**



4/8/2021, 10:41 PM, N:\Projects\20-078 Wendy Waxhaw NC\Drawings\ahnes\30\_Smart\55\_A2-2\_Exterior Elevations\_color.dwg, KenB